

# Zion Lutheran School of Kearney

## ACHIEVEMENT TEST RESULTS

# 2013- 2014

How does Zion Lutheran School compare to other schools academically? Zion uses the NWEA MAP assessment to gauge student learning. This test is given in fall, winter, and spring testing sessions and gives teachers, students, and families immediate feedback on achievement. The MAP assessment has become the assessment of choice for the Lutheran schools of the Nebraska district and is also administered by Kearney Public Schools. This uniformity of testing allows us now to better compare school achievement using classroom averages. This document will illustrate how Zion compares with other Lutheran schools and students nationally.

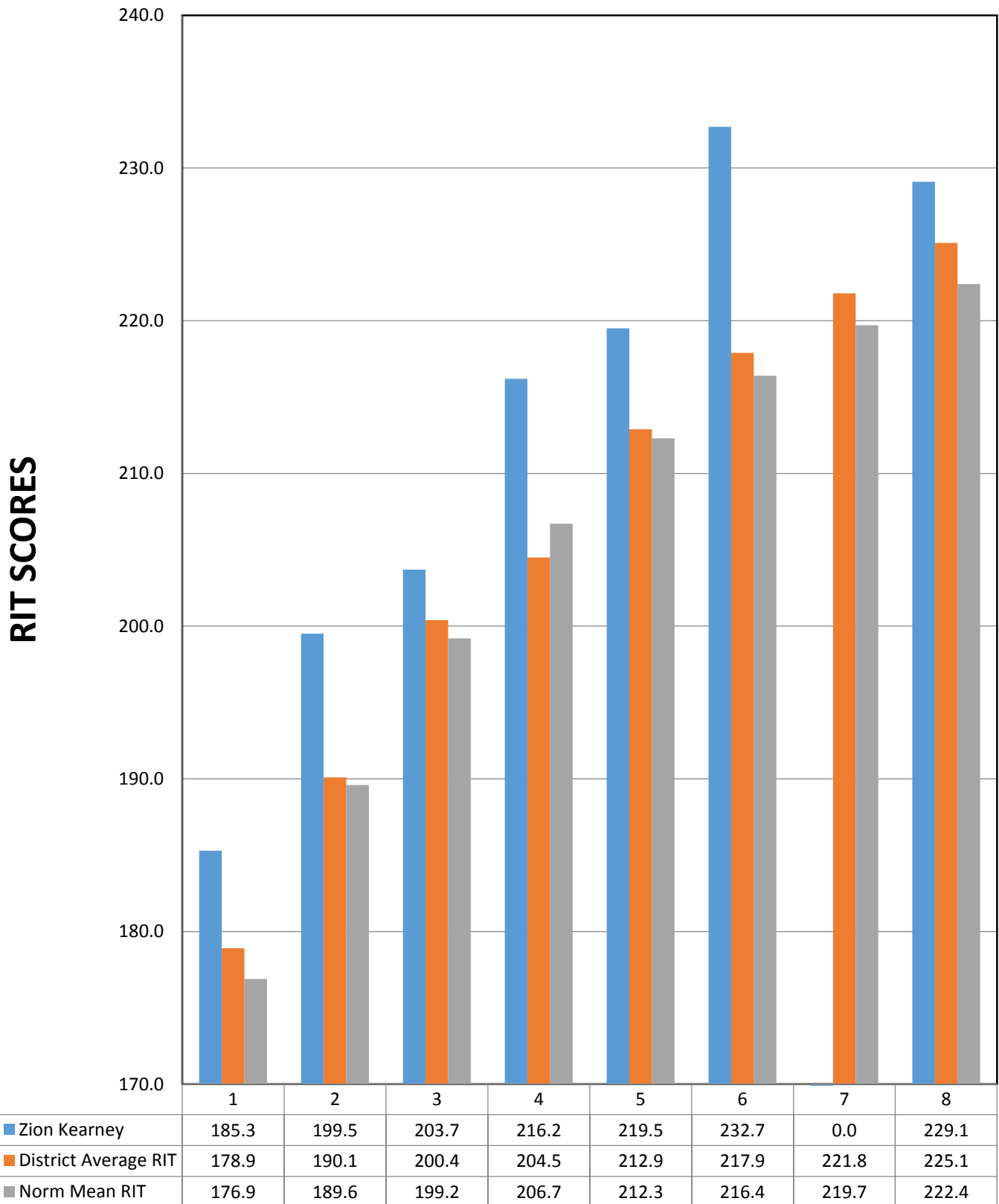
A Comparison  
of Averages

Please note:

- 1<sup>st</sup>/ 2<sup>nd</sup> graders are only assessed on math and reading
- Due to inadequate sample size, there are no scores displayed for Zion's 7<sup>th</sup> grade.
- These scores represent a true average of high and low student scores; scores for students with learning disabilities or exceptional abilities are not excluded.
- Soli Deo gloria! To God alone be the glory!

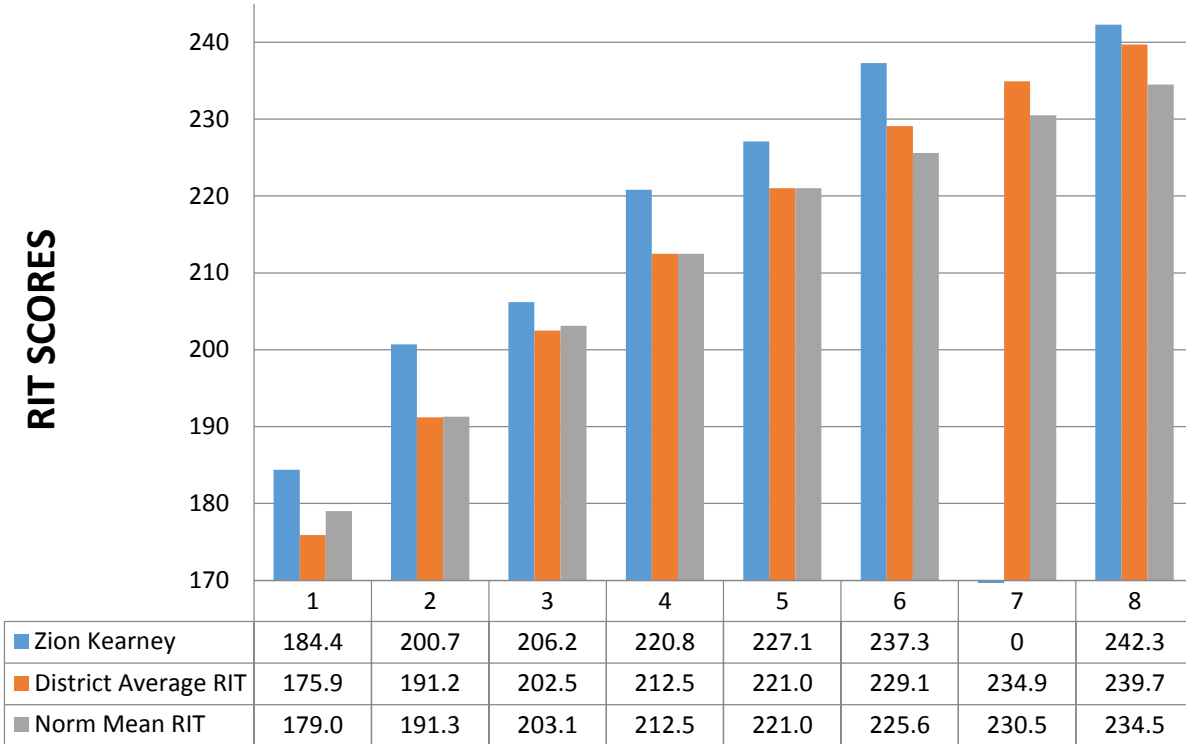
# 2013-2014 NWEA MAP Results: READING

## Zion Kearney vs. Nebraska Dist. vs. Nation



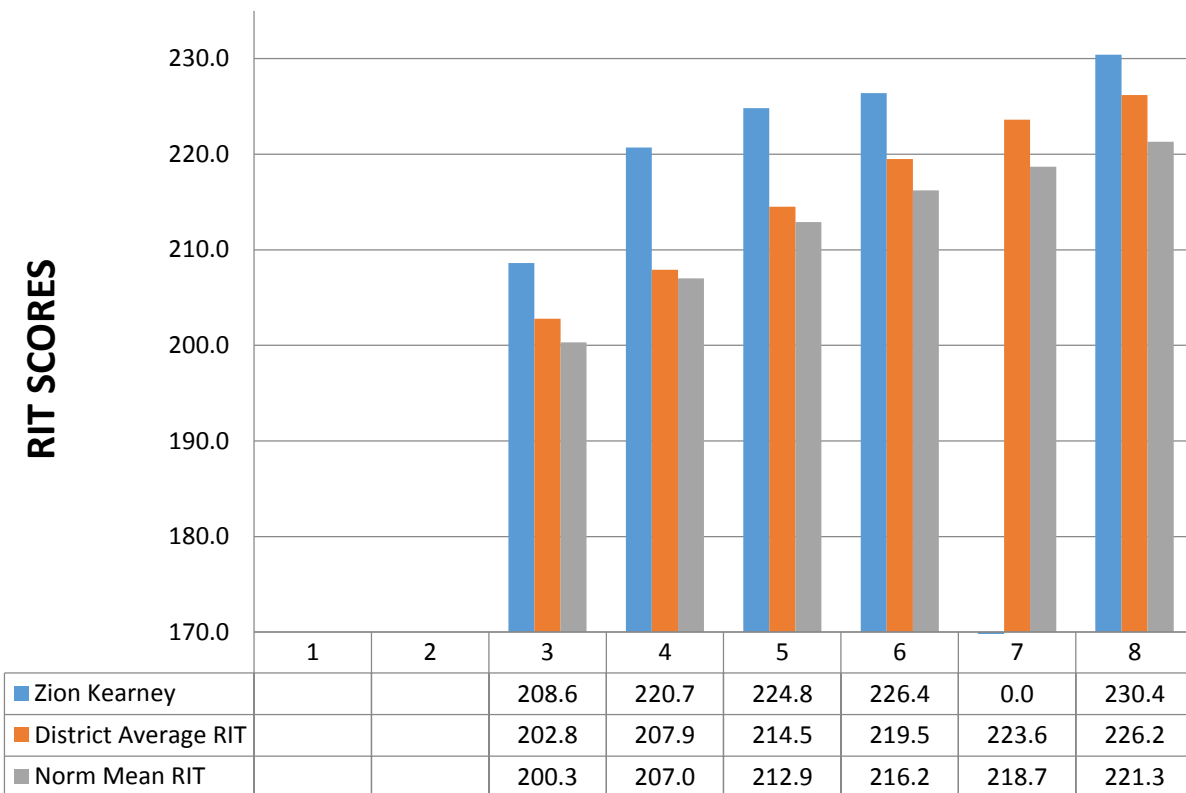
## 2013-2014 NWEA MAP Results: MATH

### Zion Kearney vs. Nebraska Dist. vs. Nation



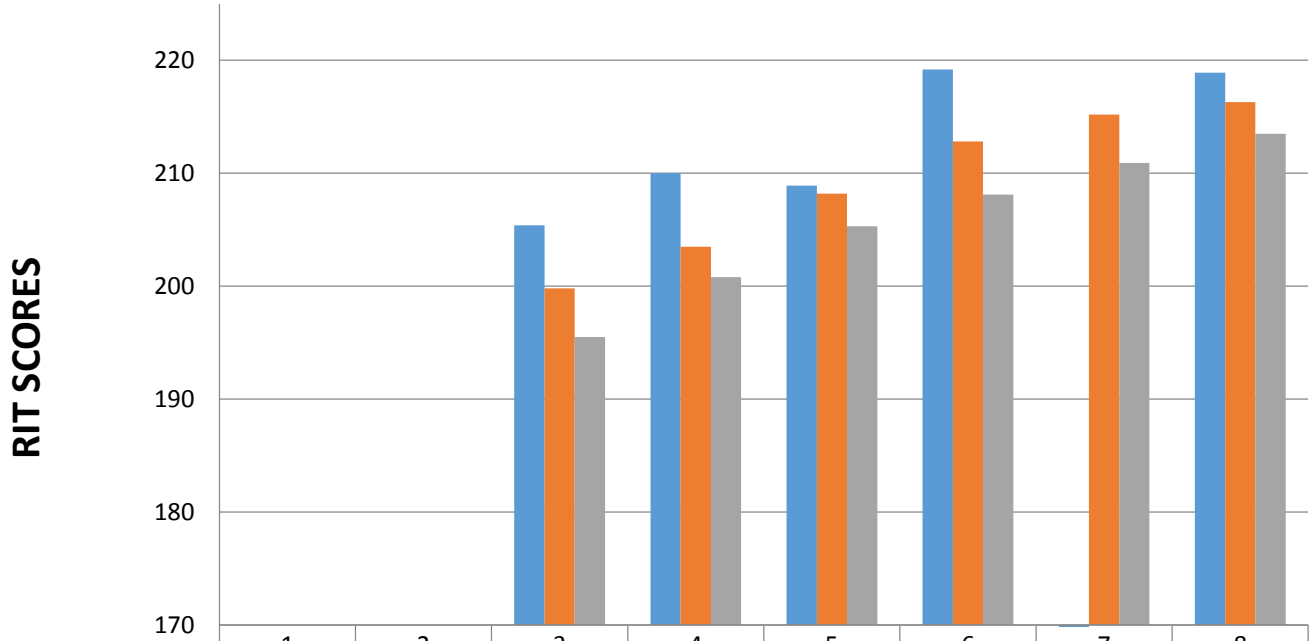
## 2013-2014 NWEA MAP Results: LANGUAGE ARTS

### Zion Kearney vs. Nebraska Dist. vs. Nation



## 2013-2014 NWEA MAP Results: SCIENCE

### Zion Kearney vs. Nebraska Dist. vs. Nation



	1	2	3	4	5	6	7	8
■ Zion Kearney			205.4	210.0	208.9	219.2	0.0	218.9
■ District Average RIT			199.8	203.50	208.2	212.8	215.2	216.3
■ Norm Mean RIT			195.5	200.8	205.3	208.1	210.9	213.5

